

THE KALYPSO COURT (2, 9)

Typical 2 BHK, 3 BHK & 4 BHK Apartment



For 2 BHK - Total Super Area 1650 sq.ft. (approx.)
 For 3 BHK - Total Super Area 2430 sq.ft. (approx.)
 For 4 BHK (Type B) - Total Super Area 3180 sq.ft. (approx.)

Floors
 4, 12
 (1sq.ft. = 0.0929 sq.mt.)

* The Floor Plans are merely indicative in nature & are subject to change as deemed appropriate by the relevant statutory authority and/or by the Company.

THE KALYPSO COURT (2, 9)

Typical 2 BHK, 3 BHK & 4 BHK with Terrace Apartment



- For 2 BHK - Total Super Area 1650 sq.ft. (approx.)
- For 3 BHK (Type B) - Total Super Area 2440 sq.ft. (approx.)
- For 4 BHK with Terrace (Type C) - Total Super Area 3340 sq.ft. (approx.)

Floors
5, 12A
(1sq.ft. = 0.0929 sq.mt.)

* The Floor Plans are merely indicative in nature & are subject to change as deemed appropriate by the relevant statutory authority and/or by the Company.

THE KALYPSO COURT (2, 9)

Typical 2 BHK & 3 BHK Apartment



- For 2 BHK - Total Super Area 1650 sq.ft. (approx.)
- For 3 BHK (Type B) - Total Super Area 2430 sq.ft. (approx.)
- For 3 BHK with Terrace - Total Super Area 2950 sq.ft. (approx.)

Floors
6, 14
(1sq.ft. = 0.0929 sq.mt.)

* The Floor Plans are merely indicative in nature & are subject to change as deemed appropriate by the relevant statutory authority and/or by the Company.

THE KALYPSO COURT (3, 8)

Typical 2 BHK & 3 BHK Apartment



For 2 BHK - Total Super Area 1630 sq.ft. (approx.)

For 3 BHK - Total Super Area 2380 sq.ft. (approx.)

Floors
1, 2, 7, 8, 9, 10,
15, 16, 17, 18, 23, 24
(1sq.ft. = 0.0929 sq.mt.)

* The Floor Plans are merely indicative in nature & are subject to change as deemed appropriate by the relevant statutory authority and/or by the Company.

THE KALYPSO COURT (3, 8)

Typical 2 BHK & 4 BHK with Terrace Apartment



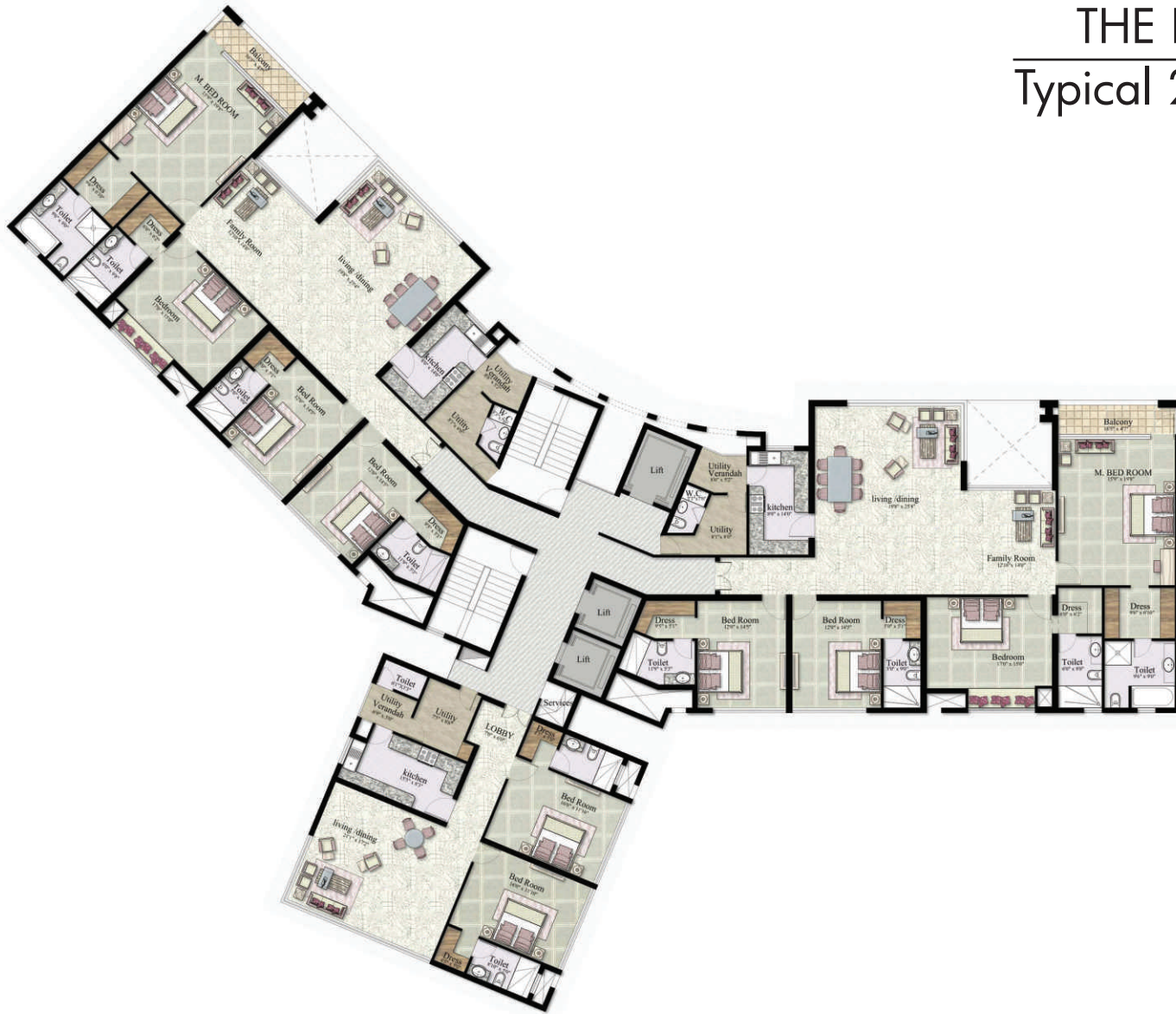
For 2 BHK - Total Super Area 1630 sq.ft. (approx.)
 For 4 BHK with Terrace (Type A) - Total Super Area 3300 sq.ft. (approx.)

Floors
 3, 11
 (1sq.ft. = 0.0929 sq.mt.)

* The Floor Plans are merely indicative in nature & are subject to change as deemed appropriate by the relevant statutory authority and/or by the Company.

THE KALYPSO COURT (3, 8)

Typical 2 BHK & 4 BHK Apartment



For 2 BHK - Total Super Area 1630 sq.ft. (approx.)
 For 4 BHK (Type B) - Total Super Area 3150 sq.ft. (approx.)

Floors
 4, 12
 (1sq.ft. = 0.0929 sq.mt.)

* The Floor Plans are merely indicative in nature & are subject to change as deemed appropriate by the relevant statutory authority and/or by the Company.

THE KALYPSO COURT (3, 8)

Typical 2 BHK & 4 BHK with Terrace Apartment



For 2 BHK - Total Super Area 1630 sq.ft. (approx.)
 For 4 BHK with Terrace (Type C) - Total Super Area 3300 sq.ft. (approx.)

Floors
 5, 12A
 (1sq.ft. = 0.0929 sq.mt.)

* The Floor Plans are merely indicative in nature & are subject to change as deemed appropriate by the relevant statutory authority and/or by the Company.

THE KALYPSO COURT (3, 8)

Typical 2 BHK & 3 BHK with Terrace Apartment



For 2 BHK - Total Super Area 1630 sq.ft. (approx.)
 For 3 BHK with Terrace - Total Super Area 2910 sq.ft. (approx.)

Floors
 6, 14
 (1sq.ft. = 0.0929 sq.mt.)

* The Floor Plans are merely indicative in nature & are subject to change as deemed appropriate by the relevant statutory authority and/or by the Company.

THE KALYPSO COURT (3, 8)

Typical 2 BHK, 3 BHK & 4 BHK with Terrace Apartment



- For 2 BHK - Total Super Area 1630 sq.ft. (approx.)
- For 3 BHK - Total Super Area 2380 sq.ft. (approx.)
- For 4 BHK with Terrace (Type B) - Total Super Area 3300 sq.ft. (approx.)

Floor
19
(1sq.ft. = 0.0929 sq.mt.)

* The Floor Plans are merely indicative in nature & are subject to change as deemed appropriate by the relevant statutory authority and/or by the Company.

THE KALYPSO COURT (3, 8)

Typical 2 BHK, 3 BHK & 4 BHK with Terrace Apartment



- For 2 BHK - Total Super Area 1630 sq.ft. (approx.)
- For 3 BHK - Total Super Area 2380 sq.ft. (approx.)
- For 4 BHK with Terrace (Type C) - Total Super Area 3300 sq.ft. (approx.)

Floor
21
(1sq.ft. = 0.0929 sq.mt.)

* The Floor Plans are merely indicative in nature & are subject to change as deemed appropriate by the relevant statutory authority and/or by the Company.